



Resource & Environmental Consultants (Asbestos) Ltd



2520



CONTRACTORS HEALTH & SAFETY ASSESSMENT SCHEME

Reassurance Air Monitoring				12-MOY-A-1723	
Procedure: documented in house procedure REC ASB 02			Customer Order	0	
			Issue Date	10/06/2012	
Site Location	Kindergarden, Bloomfield Collegiate School, Astoria Gardens, Belfast, BT5 6HW				
Areas and Description of Work	Reassurance air tests in Kindergarden classrooms following asbestos containing products being identified				
Date sampled	08/06/2012		Date counted	10/06/2012	
Sampled by	Maurice Gillanders		Slides Counted by	Maurice Gillanders	
Sign			Sign		
Client	Bloomfield Collegiate School, Astoria Gardens, Belfast, BT5 6HW				
Asbestos Removal contractor	NA				
Report Generated From	Moy				
Location Slides Counted	Moy Lab				

Dust Disturbance & Environmental Conditions

Method used	Total Time			Temp °C	Press mb
Brush	2.00	Mins	On site	19	989

Fibre Count Details

Sample No.	Location/Name/Activity	Sample Type	Time		Volume Sampled (l)
			Start	Finish	
1	Classroom 1 - Centre	Reassurance	13:24	13:59	560.0
2	Classroom 2 - Centre	Reassurance	13:27	14:00	528.0
3	Classroom 3 - Centre	Reassurance	13:31	14:01	496.0
4	Classroom 4 - Centre	Reassurance	13:33	14:06	528.0
5	Classroom 5 - Centre	Reassurance	13:35	14:07	512.0
6	Classroom 6 - Centre	Reassurance	13:56	14:30	544.0
7	Classroom 7 - Centre	Reassurance	13:58	14:34	576.0

Sample No.	Flow Rate (l/min)			Graticule Areas Examined	No. Of Fibres Counted	Reported Fibre Conc (fibres / cm3)	Limit Of Quantification (fibres / cm3)
	Start	Intermediate	Finish				
1	16.0	---	16.0	200	11.0	<0.01	0.01
2	16.0	---	16.0	200	8.0	<0.01	0.01
3	16.0	---	16.0	200	10.0	<0.01	0.01
4	16.0	---	16.0	200	11.0	<0.01	0.01
5	16.0	---	16.0	200	8.0	<0.01	0.01
6	16.0	---	16.0	200	16.5	<0.01	0.01
7	16.0	---	16.0	200	10.5	<0.01	0.01

Graticule Diam. (µm) : 100 Exposed Filter Diam. (mm) : 22.25 No. of NPL Blocks Observed : 5/6

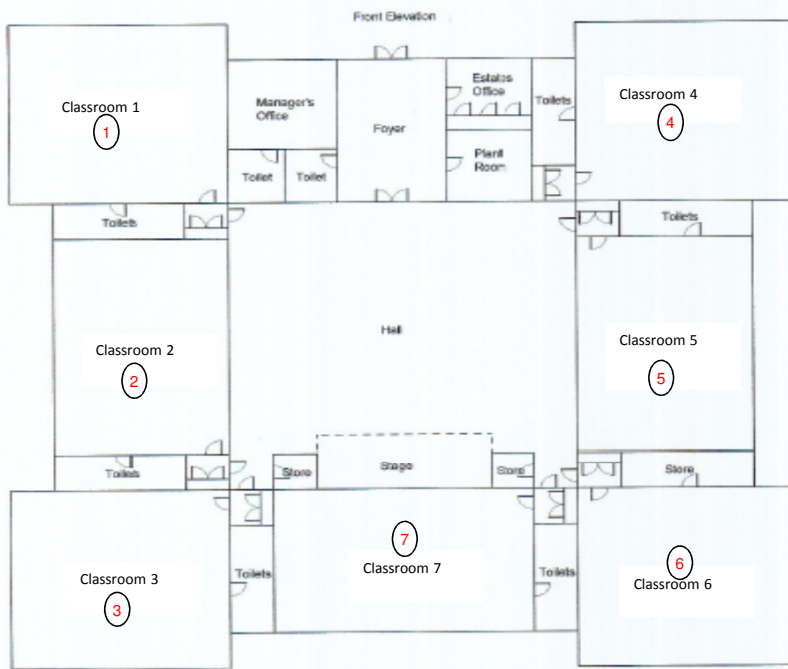
The fibrecounts obtained were below the Health and Safety Clearance indicator of 0.01 f/cm3

Comments: Air test taken after hard floors, hard surfaces and air disturbed , all air test results were below the H&S clearance indicator of 0.01 f/cm3

Disclaimer: Opinions and interpretations expressed herein are outside the scope of UKAS accreditation.



Sketch



REC Braintree	Environment House, Bullocks Lane, Takeley, Bishop's Stortford Herts, CM22 6TA T. 01279 879 416 F. 01279 879 414
REC East Kilbride	16 Langlands Place, Kelvin South Business Park, East Kilbride, Glasgow, G75 0YF T. 01355 573360 F. 01355 573351
REC Manchester	Osprey House, Pacific Quay, Broadway, Manchester, M50 2UE T. 0161 868 1300 F. 0161 868 1301
REC Port Talbot	Unit 19, Kenfig Industrial Estate, Margam, Port Talbot, SA13 2PE T. 01656 749823 F. 01656 740824
REC Moy	69A Killyman Street, Moy, Co. Tyrone, BT71 7EA T. 028 8778 9180 F. 028 8778 9171

